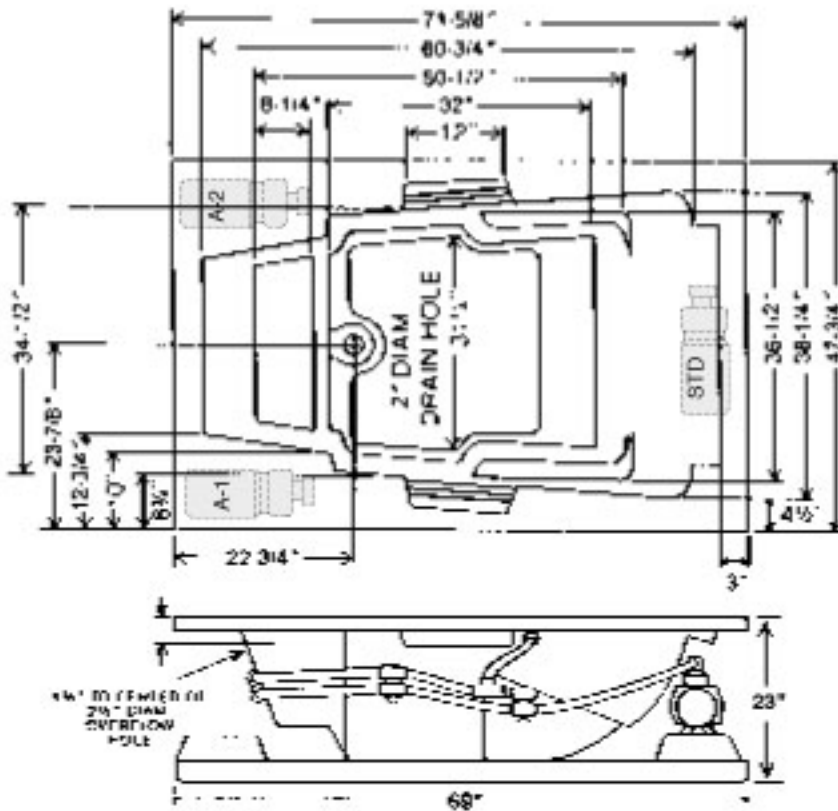


# A L I F A X

MODEL: #4872-HW  
 ACRYLIC BATH ONLY: #4872-HT

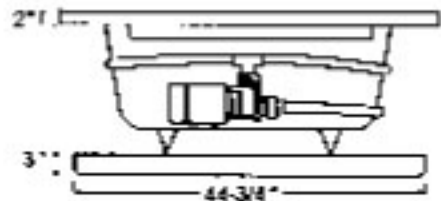
The acrylic whirlpool bath shall be model #4872-HW (4872-HT) as manufactured by Laurel Mountain Whirlpools, Inc. It shall be constructed of 1.25 thick cast acrylic sheet, backed by layers of polyester resin and fiberglass roving. It will be mounted on a FRP pre-leveled base. All components will be UL listed and approved. The pump motor will be 2 horsepower (1 phase, 115V, 60HZ, 3450 RPM, pre-mounted) and the plumbing system will be rigid PVC. The unit will contain 6 multi-directional, adjustable jets, dual air controls and a safety suction fitting. Access to pump and plumbing system must be provided by installer in accordance with established plumbing and electrical codes.

ELECTRICAL SPECIFICATIONS - 115V, 20 AMP, GFCI Protected Circuit. Additional identical circuit required with installed heater. If optional Solo Touch electronic on/off is installed, a 120 VAC, 20 AMP, GFCI dedicated circuit is required.



SPECIFICATIONS	WHIRLPOOL	TUB
71 5/8" x 47 3/4" x 23" Lip 2"		
Water Capacity - Operating Level .....	75.0 gal.	
- To Overflow .....	98.0 gal.	98.0 gal.
Approx. Unit Weight .....	230.0 lbs.	195.0 lbs.
Approx. Shipping Weight .....	300.0 lbs.	265.0 lbs.

\*All dimensions are +/- 3/8" and subject to change without notice. Always pre-measure tub/whirlpool prior to framing alcove or creating deck installation cut out.



ELECTRICAL REQUIREMENTS: 115V, 20 AMP, GFCI Protected Circuit. Additional source circuit required for optional In-Line "T" Heater. 120 VAC, 20 Amp, GFCI dedicated circuit required with option "Solo Touch" On/off control



Bath Environment

www.whirlpoolbath.net  
 whirlpool@earthlink.net  
 800-894-1022