

THE COLONY COLLECTION

LAUREL MOUNTAIN

WHIRLPOOLS



LUXURY ACRYLIC WHIRLPOOLS

LAUREL MOUNTAIN
WHIRLPOOLS

FEATURES

Laurel Mountain Whirlpools are designed to be handsome, durable and maintenance-free additions to any lifestyle. The Colony Collection of top-of-the-line models go a step further by including, as standard equipment, the best convenience and decorator features on the market today.

ADJUSTABLE JET



Using DuPont Lucite XL Cast Acrylic Sheet, the finest surface material available, our expert craftsmen create whirlpool baths in a wide variety of shapes, sizes and colors. All trim fixtures are provided as standard in complementary



ELECTRONIC TOUCH CONTROL

color coordination for all available acrylic colors. They may also be ordered in custom metal finishes to complement existing faucets and other bathroom fixtures. A full two horsepower motor is standard on all Colony Collection whirlpools, insuring optimum performance and an invigorating hydrotherapeutic massage. Each whirlpool in this collection is available with an



NEW IMPROVED MOTOR
TWO HORSEPOWER PUMP

PILLOW



Electronic Touch Control, enabling the user to turn the whirlpool on or off with a touch of the finger. There is a built-in 20 minute timer and a low-water sensor that will turn the

motor off automatically if the water level drops below the operating range. A pneumatic air switch is standard. The dual air volume controls that regulate the jet air flow are conveniently located within reach. Also, the six jets are individually adjustable for velocity and direction to create a custom hydrotherapeutic massage.



AIR CONTROL



LUMBAR SUPPORT

An optional in-line electric heater keeps water temperature within 2 degrees of a desired temperature, regardless of how long the whirlpool is used. Lumbar support is molded into every Colony Collection whirlpool to provide lower back support; pillows

are larger, more comfortable and easier to clean than those of most competing brands.

Laurel Mountain Whirlpools are easy to install.



BASE

Each is mounted on a pre-leveled fiberglass reinforced plastic (FRP) installation base.

There is no need to level and shim and the FRP base will not warp or decompose like wood bottoms used by some other manufacturers. The installation base, made at the factory



HEATER

exclusively for your Laurel Mountain Whirlpool, provides multiple custom pump locations which provide the installer access options and lower plumbing installation costs. ❁ A removable skirt panel provides easy access to the drain, plumbing connection, motor and piping system. There is no need to build special access panels in a wall or closet. ❁



ACCESS PANEL

SPECIAL FEATURES

The Hydrotherapy Back Massage option has eight powerful micro jets specially located along the lumbar area from the shoulder blades to the lower back. You adjust the air/water mix and the speed at which these jets alternate up and down your lumbar region, like the magic fingers of a trained masseuse. ❁ Laurel Mountain also offers an optional



HYDROTHERAPY BACK MASSAGE

Hydrotherapy Air Massage System which delivers a complete, full body massage resulting from warm forced air circulating throughout the tub, soothing tired muscles and joints. Our Lumbar Jet Package targets your lower lumbar region with rotating jets. ❁ The Neck Massage Pillow directs a warm, pulsating hydro-mas-



LUMBAR JET PACKAGE

sage onto the neck. The flow of water alternates back and forth from side to side to gently massage sore muscles.



MASSAGE PILLOW

THE COLONY COLLECTION

The Colony Collection by Laurel Mountain features the most beautifully designed, traditionally elegant and widely versatile whirlpool baths ever manufactured. Each whirlpool is individually crafted to meet the most demanding specifications. Unparalleled quality, dependability, ease of installation and serviceability are engineered into every whirlpool we make. Our express delivery system is second to none. These top-of-the-line Colony Collection whirlpool baths offer a wide variety of features as standard that can only be found as costly upgrades on most competing brands. Customers will appreciate the fresh, clean styling featuring soft flowing lines. All models are constructed using 100% virgin acrylic sheet to form the premium surface available today in terms of long lasting appearance, and color fastness. Laurel Mountain Whirlpools is committed to offering not only the finest product but also the greatest product value. We will continue to define and create tomorrow's innovations -- today.

COLORS

The Colony Collection whirlpools can be ordered in a wide variety of acrylic colors with complimentary color match trim. Metal trim may also be ordered in custom metal finishes to complement existing bathroom fixtures.

STANDARD DESIGNER COLORS

	391 Almond		437 Platinum		077 Tender Grey*
	345 Bone		380 Raspberry Puree*		064 White
	401 Natural		370 Sterling Silver		334 Wild Rose
	528 Biscuit				

ACRYLIC FASHION COLORS

	758 Warm White		706 Verde*		755 Rainforest Green
	233 Red		690 Spring		325 Seafoam Green
	252 Black		816 Sandbar		350 Navy Blue
	689 Desert Bloom		222 Mexican Sand		813 Sunlight
	756 Loganberry		486 Light Mink		670 Daydream
	355 Fawn Beige		769 Timberline		712 Sandlewood
	791 Skylight Blue		695 Ice Gray		400 Shell
	520 Candlelight		739 Merlot*		078 Thunder Grey
	080 Innocent Blush		757 Rhapsody Blue		266 Teal*

MARBLE S

Please call for current list of available Marble colors.

GRANITE

Please call for current list of available Granite colors.

Actual colors may vary. Please check with your distributor for color samples. *May be discontinued. Please call for availability.



LAUREL MOUNTAIN WHIRLPOOLS, INC.

Designed by you for you!
Colony Collection

Premium Custom Whirlpools

Made in USA

Premium Quality Construction Includes:

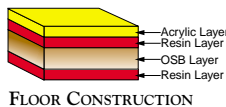
- Floor construction—3/4" non-flex OSB reinforced wood
- Pre-leveled installation base
- No installation mortar needed
- Deck reinforced with 1/2" rigid steel rod
- Extra heavy acrylic for strength & durability
- Long lasting, no leak, gaskets to attach plumbing system
- 2 HP motor
- Easy install available with multiple pump locations
- Dual air volume controls
- Premium resin reinforcement, no shrink or warp



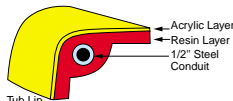
BASE



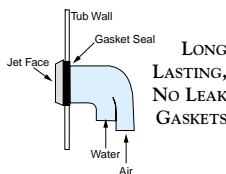
TWO HORSEPOWER PUMP



FLOOR CONSTRUCTION



DECK REINFORCEMENT



LONG LASTING, NO LEAK GASKETS

Standard Features with Laurel Mountain:

- Adjustable jets
- 2 HP motor
- Extra deep tub in all models
- Pneumatic air switch
- Dual air volume controls within easy reach
- Lumbar support molded in every tub
- Designer textured tub bottom
- Easy clean jets
- Designer comfort arm rests
- Pillows on all oval & rectangle models
- 10 year tub shell warranty, 5 year plumbing system warranty



ADJUSTABLE JET



ELECTRONIC TOUCH CONTROL



PILLOW

Options for your personal custom whirlpool:

- Hydrotherapy back massage
- Hydromassage bubble system
- Hydro-massage neck pillow
- Maximum color selection in the industry
- Variety selection of jet trim colors
- Custom metal trim



MASSAGE PILLOW

- In-line heaters
- Electronic touch controls with timer and low water shutdown
- Lumbar jet package for added affordability
- Variable speed motors
- Additional jets available
- Mood lights with color options



LUMBAR JET PACKAGE

THE COLONY COLLECTION

LAUREL MOUNTAIN WHIRLPOOLS

HYDROTHERAPY

BACK MASSAGE SYSTEM

A long awaited addition to the extensive array of optional upgrades to your new Laurel Mountain Colony Collection Whirlpool.

Eight powerful micro jets are specially located along the lumbar area from the shoulder blades to the lower back. This package comes standard with a powerful 3/4 horsepower motor and can be operated independently or in addition to the 2 horsepower standard whirlpool system. You adjust the air/water mix and the speed at which these jets alternate up and down your lumbar region, like the magic fingers of a trained masseuse.

Option Features:

- ▶ 3/4 horsepower motor operated Hydrotherapy Back Massage System and a 2 horsepower motor operates the standard whirlpool package when ordered with the whirlpool.
- ▶ 8 micro jets, available in white, bone, grey, chrome or brass
- ▶ Diverter valve, plus special air control, allows for control of back jets' bubble action and sequence speed
- ▶ Can be ordered with many other popular options including neck jet massage pillow, heater, rotary jets, etc.



Bath Environment

www.whirlpoolbath.net
whirlpool@earthlink.net
800-894-1022

THE COLONY COLLECTION

LAUREL MOUNTAIN WHIRLPOOLS

NECK MASSAGE PILLOW

Relief for stressed-out neck muscles is finally here. Circulation through the neck muscles is key to relieving stress and stiffness. This patent-pending Neck Massage Pillow is designed to improve circulation and blood flow to RELAX muscle tension.

The Neck Massage Pillow directs a warm, pulsating hydro-massage onto the neck. The flow of water alternates back and forth from side to side to gently massage sore muscles.

You select the pulse level. Level One is subtle and gentle. Level Two is more vigorous and soothing. Level Three is intense for maximum stress relief.

Choose from among the vast ensemble of luxurious options to upgrade and customize your Laurel Mountain Colony Collection Whirlpool.



Bath Environment

www.whirlpoolbath.net
whirlpool@earthlink.net
800-894-1022

THE COLONY COLLECTION

LAUREL MOUNTAIN WHIRLPOOLS

HYDROTHERAPY AIR MASSAGE SYSTEM

The brand new Hydrotherapy Air Massage System from Laurel Mountain offers a completely new dimension to jetted tubs. A complete, full body massage results from warm forced air circulating throughout the tub, soothing tired muscles and joints.

These special mini-jets are strategically placed along the lower tub wall to most effectively reach all parts of the body. The Hydrotherapy Air Massage System delivers the ultimate in hygienic conditions. There is no re-circulated water in the system and a blow down drying cycle prevents any water retention throughout. This revolutionary option is available on Colony Collection models and can be specified with or without the standard 2 horsepower whirlpool system.

Option Features:

- ▶ 16 lateral turbo air jets - side wall mounted and will not retain water - available in white, bone, chrome or brass
- ▶ Warm air blower, extra powerful 2 horsepower with 300 watt heating element standard
- ▶ Electronic control provides one-touch on/off-variable high/low blower speed- oscillating blower speed function
- ▶ Automatic water purge cycle 20 minutes after system shut-off
- ▶ Can be used with, or separately from, the standard 6-jet 2-horsepower whirlpool system



Bath Environment

www.whirlpoolbath.net
whirlpool@earthlink.net
800-894-1022



THE OAKMONT I & II



A K M O N T I & I I

I MODEL: #4872-OW
 ACRYLIC BATH ONLY: #4872-OT

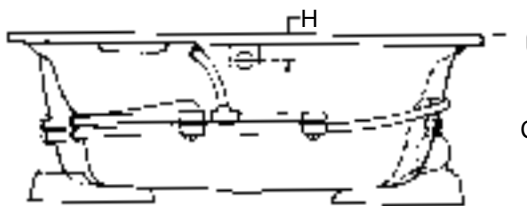
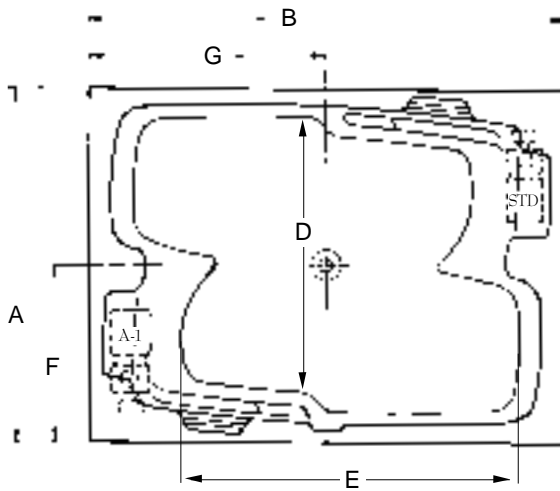
II MODEL: #5472-OW
 ACRYLIC BATH ONLY: #5472-OT

The acrylic whirlpool bath models shown on this page are manufactured by Laurel Mountain Whirlpools, Inc. The models shall be constructed of .125 thick cast acrylic sheet, backed by layers of polyester resin and fiberglass roving. It will be mounted on a FRP pre-leveled base. All components will be UL listed and approved. The pump motor will be 2 horsepower (1 phase, 115V, 60HZ, 3450 RPM, pre-mounted) and the plumbing system will be rigid PVC. The unit will contain 6 multi-directional, adjustable jets, dual air controls and a safety suction fitting. Access to pump and plumbing system must be provided by installer in accordance with established plumbing and electrical codes.

ELECTRICAL SPECIFICATIONS - 115V, 20 AMP, GFCI Protected Dedicated Circuit required for either Standard Air Switch or optional Solo Touch Electronic System. Additional identical circuit required with optional installed heater.

*All dimensions are +/- 3/8" and subject to change without notice. Always pre-measure tub/whirlpool prior to framing alcove or creating deck installation cut out.

*Available with an optional attachable skirt with removable access panel.



MODEL #	A	B	C	D	E	F	G	H
4872-OW/4872-OT	48	72	26	30	42	24	36	5 1/2
5472-OW/5472-OT	53 5/8	71 5/8	26	40	42	26 3/4	35 3/4	5 1/2

MODEL #	WATER CAPACITY OPERATING LEVEL	WATER CAPACITY TO OVERFLOW	APPROX. UNIT WT.	APPROX. SHIPPING WT.
4872-OW	70 gal.	127 gal	205 lbs.	270 lbs.
4872-OT	-	127 gal	170 lbs.	235 lbs.
5472-OW	80 gal.	140 gal.	218 lbs.	285 lbs.
5472-OT	-	140 gal.	183 lbs.	250 lbs.



Bath Environment

www.whirlpoolbath.net
 whirlpool@earthlink.net
 800-894-1022



THE SENECA I, II & III

ENECA I, II & III

I MODEL: #4260-SW
 ACRYLIC BATH ONLY: #4260-ST

II MODEL: #4272-SW
 ACRYLIC BATH ONLY: #4272-ST

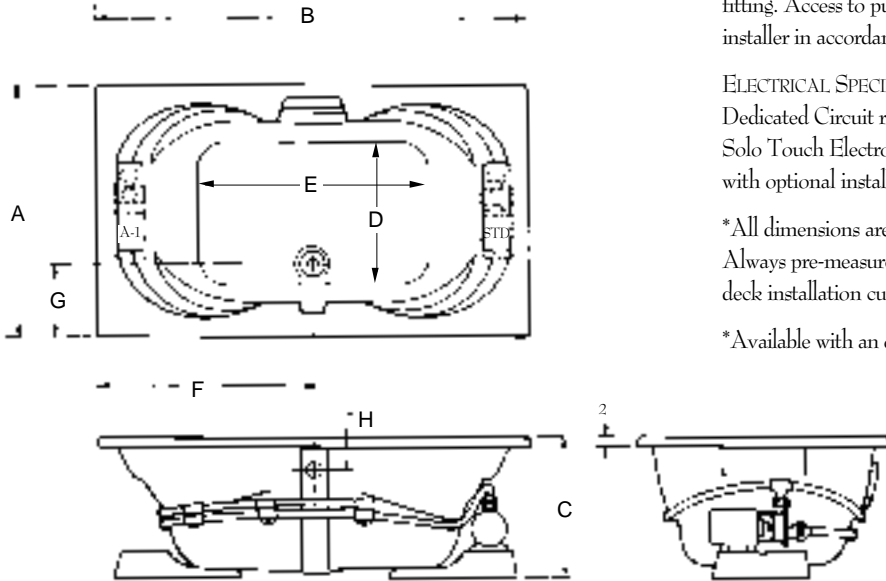
III MODEL: #4872-SW
 ACRYLIC BATH ONLY: #4872-ST

The acrylic whirlpool bath models shown on this page are manufactured by Laurel Mountain Whirlpools, Inc. The models shall be constructed of .125 thick cast acrylic sheet, backed by layers of polyester resin and fiberglass roving. It will be mounted on a FRP pre-leveled base. All components will be UL listed and approved. The pump motor will be 2 horsepower (1 phase, 115V, 60HZ, 3450 RPM, pre-mounted) and the plumbing system will be rigid PVC. The unit will contain 6 multi-directional, adjustable jets, dual air controls and a safety suction fitting. Access to pump and plumbing system must be provided by installer in accordance with established plumbing and electrical codes.

ELECTRICAL SPECIFICATIONS - 115V, 20 AMP, GFCI Protected Dedicated Circuit required for either Standard Air Switch or optional Solo Touch Electronic System. Additional identical circuit required with optional installed heater.

*All dimensions are +/- 3/8" and subject to change without notice. Always pre-measure tub/whirlpool prior to framing alcove or creating deck installation cut out.

*Available with an optional attachable skirt with removable access panel.



MODEL #	A	B	C	D	E	F	G	H
4260-SW/4260-ST	42	60	23	25	38	30	12	5 1/2
4272-SW/4272-ST	41 7/8	71 3/4	23	25	42	35 3/4	12	5 1/2
4872-SW/4872-ST	48	72 1/2	23	31	42	36 1/4	12	5 1/2

MODEL #	WATER CAPACITY OPERATING LEVEL	WATER CAPACITY TO OVERFLOW	APPROX. UNIT WT.	APPROX. SHIPPING WT.
4260-SW	44 gal.	90 gal.	170 lbs.	235 lbs.
4260-ST	-	90 gal.	135 lbs.	200 lbs.
4272-SW	56 gal.	101 gal.	185 lbs.	250 lbs.
4272-ST	-	101 gal.	150 lbs.	215 lbs.
4872-SW	65 gal.	112 gal.	200 lbs.	265 lbs.
4872-ST	-	112 gal.	165 lbs.	230 lbs.



Bath Environment

www.whirlpoolbath.net
 whirlpool@earthlink.net
 800-894-1022



THE WAVERLY I & II



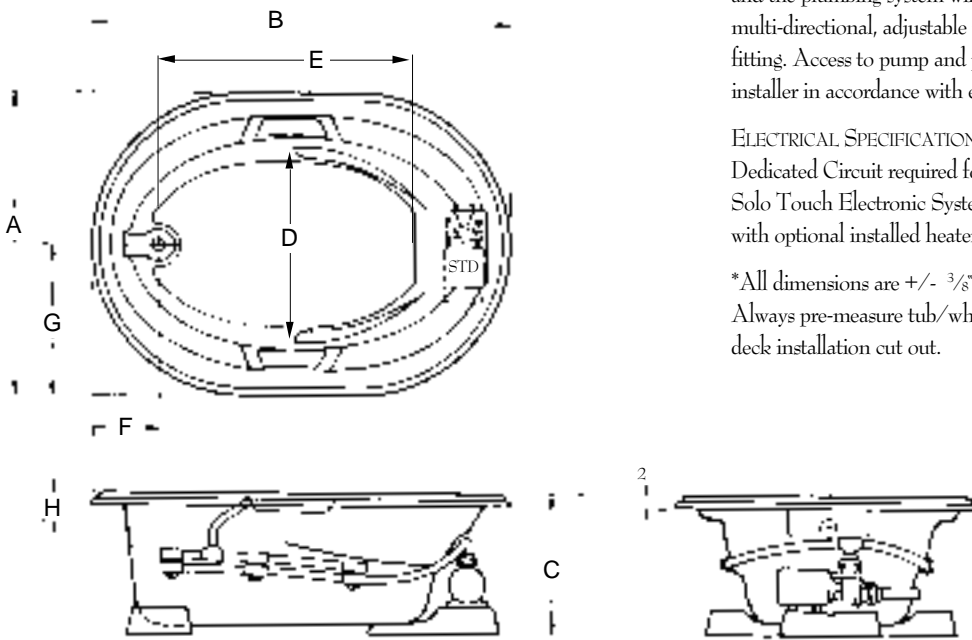
AVERLY I & II

- I MODEL: #4260-WW
ACRYLIC BATH ONLY: #4260-WT
- II MODEL: #4272-WW
ACRYLIC BATH ONLY: #4272-WT

The acrylic whirlpool bath models shown on this page are manufactured by Laurel Mountain Whirlpools, Inc. The models shall be constructed of .125 thick cast acrylic sheet, backed by layers of polyester resin and fiberglass roving. It will be mounted on a FRP pre-leveled base. All components will be UL listed and approved. The pump motor will be 2 horsepower (1 phase, 115V, 60HZ, 3450 RPM, pre-mounted) and the plumbing system will be rigid PVC. The unit will contain 6 multi-directional, adjustable jets, dual air controls and a safety suction fitting. Access to pump and plumbing system must be provided by installer in accordance with established plumbing and electrical codes.

ELECTRICAL SPECIFICATIONS - 115V, 20 AMP, GFCI Protected Dedicated Circuit required for either Standard Air Switch or optional Solo Touch Electronic System. Additional identical circuit required with optional installed heater.

*All dimensions are +/- 3/8" and subject to change without notice. Always pre-measure tub/whirlpool prior to framing alcove or creating deck installation cut out.



MODEL #	A	B	C	D	E	F	G	H
4260-WW / 4260-WT	45 ^{5/8}	63 ^{1/2}	21 ^{1/2}	27	36	10 ^{1/2}	22 ^{3/4}	5 ^{1/2}
4272-WW / 4272-WT	45 ^{5/8}	75	21 ^{1/2}	28	50	13	22 ^{3/4}	5 ^{1/2}

MODEL #	WATER CAPACITY OPERATING LEVEL	WATER CAPACITY TO OVERFLOW	APPROX. UNIT WT.	APPROX. SHIPPING WT.
4260-WW	38 gal.	56 gal.	135 lbs.	190 lbs.
4260-WT	-	56 gal.	100 lbs.	155 lbs.
4272-WW	59 gal.	75 gal.	147 lbs.	212 lbs.
4272-WT	-	75 gal.	112 lbs.	177 lbs.





THE TREMONT

ALSO AVAILABLE WITH AN OPTIONAL
ATTACHED SKIRT WITH REMOVABLE ACCESS PANEL

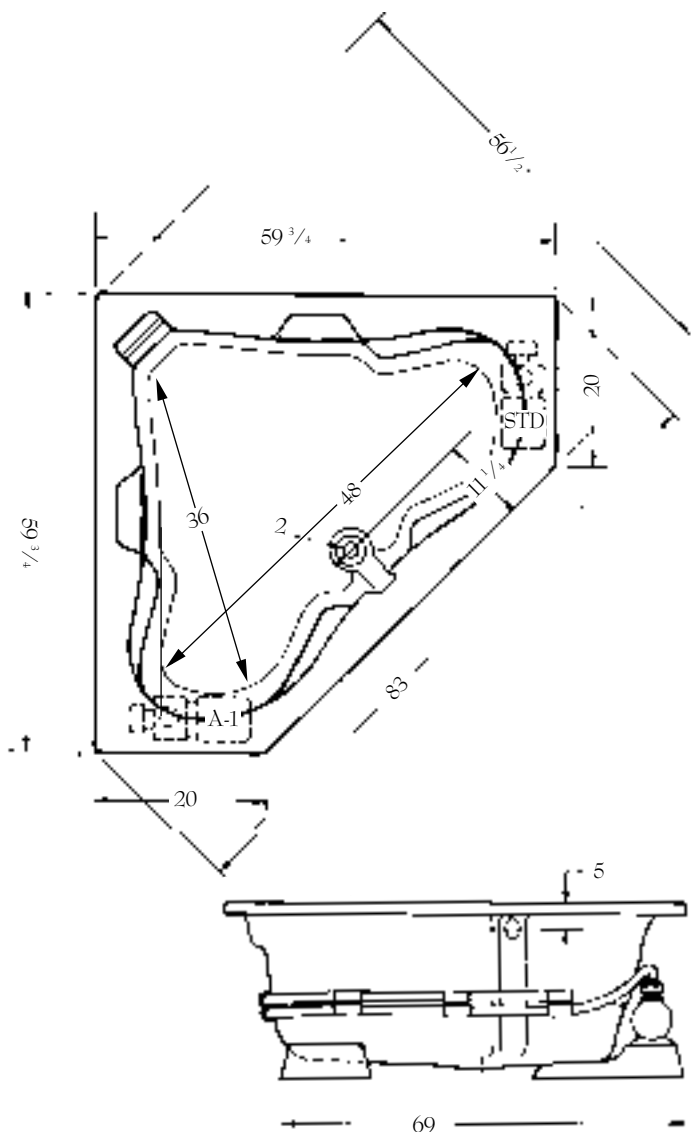


R E M O N T

MODEL: #6060-TW
 ACRYLIC BATH ONLY: #6060-TT

The acrylic whirlpool bath shall be model #6060-TW (6060-TT) as manufactured by Laurel Mountain Whirlpools, Inc. It shall be constructed of .125 thick cast acrylic sheet, backed by layers of polyester resin and fiberglass roving. It will be mounted on a FRP pre-leveled base. All components will be UL listed and approved. The pump motor will be 2 horsepower (1 phase, 115V, 60HZ, 3450 RPM, pre-mounted) and the plumbing system will be rigid PVC. The unit will contain 6 multi-directional, adjustable jets, dual air controls and a safety suction fitting. Access to pump and plumbing system must be provided by installer in accordance with established plumbing and electrical codes.

ELECTRICAL SPECIFICATIONS - 115V, 20 AMP, GFCI Protected Circuit. Additional identical circuit required with installed heater. If optional Solo Touch electronic on/off is installed, a 120 VAC, 20 AMP, GFCI dedicated circuit is required.



SPECIFICATIONS	WHIRLPOOL	TUB
59 3/4" x 59 3/4" x 23" Lip 2"		
Water Capacity - Operating Level	58.0gal.	
- To Overflow	80.0 gal.	80.0 gal.
Approx. Unit Weight	175.0 lbs.	140.0 lbs.
Approx. Shipping Weight	240.0 lbs.	205.0 lbs.

*All dimensions are +/- 3/8" and subject to change without notice. Always pre-measure tub/whirlpool prior to framing alcove or creating deck installation cut out.

ELECTRICAL REQUIREMENTS: 115V, 20 AMP, GFCI Protected Circuit. Additional source circuit required for optional In-Line "T" Heater. 120 VAC, 20 Amp, GFCI dedicated circuit required with option "Solo Touch" On/off control



Bath Environment

www.whirlpoolbath.net
 whirlpool@earthlink.net
 800-894-1022



THE WINDSOR

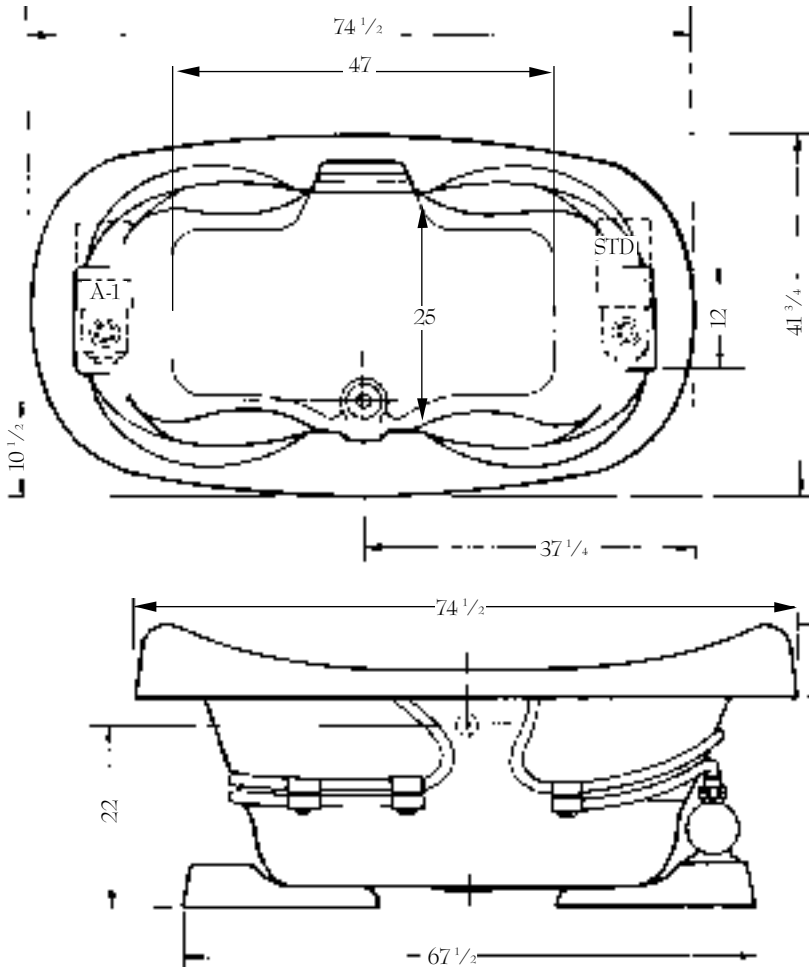


I N D S O R

MODEL: #4272-WIW
 ACRYLIC BATH ONLY: #4272-WIT

The acrylic whirlpool bath shall be model #4272-WIW (4272-WIT) as manufactured by Laurel Mountain Whirlpools, Inc. It shall be constructed of .125 thick cast acrylic sheet, backed by layers of polyester resin and fiberglass roving. It will be mounted on a FRP pre-leveled base. All components will be UL listed and approved. The pump motor will be 2 horsepower (1 phase, 115V, 60HZ, 3450 RPM, pre-mounted) and the plumbing system will be rigid PVC. The unit will contain 6 multi-directional, adjustable jets, dual air controls and a safety suction fitting. Access to pump and plumbing system must be provided by installer in accordance with established plumbing and electrical codes.

ELECTRICAL SPECIFICATIONS - 115V, 20 AMP, GFCI Protected Circuit. Additional identical circuit required with installed heater. If optional Solo Touch electronic on/off is installed, a 120 VAC, 20 AMP, GFCI dedicated circuit is required.



SPECIFICATIONS	WHIRLPOOL	TUB
41 3/4" x 74 1/2" x 31 1/2" Lip 2"		
Water Capacity - Operating Level	60.0 gal.	
- To Overflow	76.0 gal.	76.0 gal.
Approx. Unit Weight	165.0 lbs.	130.0 lbs.
Approx. Shipping Weight	230.0 lbs.	195.0 lbs.

*All dimensions are +/- 3/8" and subject to change without notice. Always pre-measure tub/whirlpool prior to framing alcove or creating deck installation cut out.

ELECTRICAL REQUIREMENTS: 115V, 20 AMP, GFCI Protected Circuit. Additional source circuit required for optional In-Line "I" Heater. 120 VAC, 20 Amp, GFCI dedicated circuit required with option "Solo Touch" On/off control



Bath Environment

www.whirlpoolbath.net
 whirlpool@earthlink.net
 800-894-1022



THE MERCER I, II, III

ERCER I, II & III

I MODEL: #3260-MW
 ACRYLIC BATH ONLY: #3260-MT

II MODEL: #3660-MW
 ACRYLIC BATH ONLY: #3660-MT

III MODEL: #3672-MW
 ACRYLIC BATH ONLY: #3672-MT

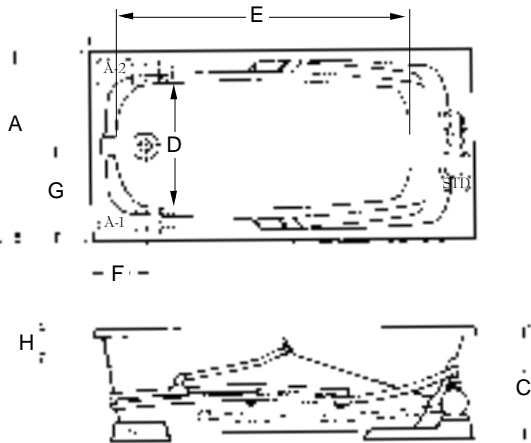
The acrylic whirlpool bath models shown on this page are manufactured by Laurel Mountain Whirlpools, Inc. The models shall be constructed of .125 thick cast acrylic sheet, backed by layers of polyester resin and fiberglass roving. It will be mounted on a FRP pre-leveled base. All components will be UL listed and approved. The pump motor will be 2 horsepower (1 phase, 115V, 60HZ, 3450 RPM, pre-mounted) and the plumbing system will be rigid PVC. The unit will contain 6 multi-directional, adjustable jets, dual air controls and a safety suction fitting. Access to pump and plumbing system must be provided by installer in accordance with established plumbing and electrical codes.

ELECTRICAL SPECIFICATIONS - 115V, 20 AMP, GFCI Protected
 Dedicated Circuit required for either Standard Air Switch or optional Solo Touch Electronic System. Additional identical circuit required with optional installed heater.

*All dimensions are +/- 3/8" and subject to change without notice.
 Always pre-measure tub/whirlpool prior to framing alcove or creating deck installation cut out.

*Available with an optional attachable skirt with removable access panel.

***NOTE: Alternate pump locations not available on 3260-MW.



MODEL #	A	B	C	D	E	F	G	H
3260-MW/3260-MT	31 ^{7/8}	59 ^{3/4}	21 ^{1/2}	16	37	9 ^{1/2}	16	5 ^{1/2}
3660-MW/3660-MT	35 ^{7/8}	59 ^{7/8}	21 ^{1/2}	19	37	9 ^{7/8}	18	5 ^{1/2}
3672-MW/3672-MT	35 ^{5/8}	71 ^{5/8}	21 ^{1/2}	19	50	10 ^{1/4}	18	5 ^{1/2}

MODEL #	WATER CAPACITY OPERATING LEVEL	WATER CAPACITY TO OVERFLOW	APPROX. UNIT WT.	APPROX. SHIPPING WT.
3260-MW	41 gal.	54 gal.	120 lbs.	185 lbs.
3260-MT	-	54 gal.	85 lbs.	150 lbs.
3660-MW	44 gal.	58 gal.	135 lbs.	200 lbs.
3660-MT	-	58 gal.	100 lbs.	165 lbs.
3672-MW	51 gal.	71 gal.	145 lbs.	210 lbs.
3672-MT	-	71 gal.	110 lbs.	175 lbs.



Bath Environment

www.whirlpoolbath.net
 whirlpool@earthlink.net
 800-894-1022



THE MERCER IV, V & VI

ERCER IV, V & VI

- IV** MODEL: #3260-MWSR/SL
ACRYLIC BATH ONLY: #3260-MTSR/SL
- V** MODEL: #3660-MWSR/SL
ACRYLIC BATH ONLY: #3660-MTSR/SL
- VI** MODEL: #3672-MWSR/SL
ACRYLIC BATH ONLY: #3672-MTSR/SL

The acrylic whirlpool bath models shown on this page are manufactured by Laurel Mountain Whirlpools, Inc. The models shall be constructed of .125 thick cast acrylic sheet, backed by layers of polyester resin and fiberglass roving. It will be mounted on a FRP pre-leveled base. All components will be UL listed and approved. The pump motor will be 2 horsepower (1 phase, 115V, 60HZ, 3450 RPM, pre-mounted) and the plumbing system will be rigid PVC. The unit will contain 6 multi-directional, adjustable jets, dual air controls and a safety suction fitting. Access to pump and plumbing system must be provided by installer in accordance with established plumbing and electrical codes.

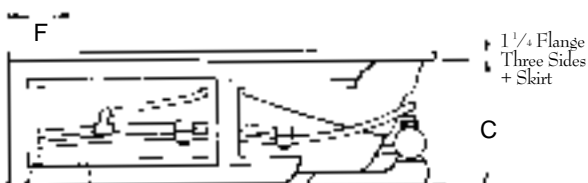
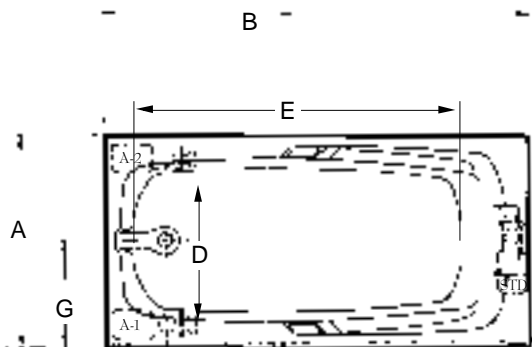
ELECTRICAL SPECIFICATIONS - 115V, 20 AMP, GFCI Protected Dedicated Circuit required for either Standard Air Switch or optional Solo Touch Electronic System. Additional identical circuit required with optional installed heater.

*All dimensions are +/- 3/8" and subject to change without notice. Always pre-measure tub/whirlpool prior to framing alcove or creating deck installation cut out.

**Access panels on skirted tub only are available only when ordered as an upgrade option.

***All models shown are made with an integral skirt and an integral nailing flange.

****NOTE: Alternate pump locations not available on 3260-MW SR/SL.



MODEL #	A	B	C	D	E	F	G	H
3260-MWSR/SL / 3260-MTSR/SL	32	59 ³ / ₄	21 ¹ / ₂	16	37	9 ¹ / ₂	16	5 ¹ / ₂
3660-MWSR/SL / 3660-MTSR/SL	36	59 ³ / ₄	21 ¹ / ₂	19	37	10	18	5 ¹ / ₂
3672-MWSR/SL / 3672-MTSR/SL	36	71 ³ / ₄	21 ¹ / ₂	19	50	10	18	5 ¹ / ₂

MODEL #	WATER CAPACITY OPERATING LEVEL	WATER CAPACITY TO OVERFLOW	APPROX. UNIT WT.	APPROX. SHIPPING WT.
3260-MWSR/SL	41 gal.	54 gal.	120 lbs.	185 lbs.
3260-MTSR/SL	-	54 gal.	85 lbs.	150 lbs.
3660-MWSR/SL	44 gal.	58 gal.	135 lbs.	200 lbs.
3660-MTSR/SL	-	58 gal.	100 lbs.	165 lbs.
3672-MWSR/SL	51 gal.	71 gal.	145 lbs.	210 lbs.
3672-MTSR/SL	-	71 gal.	110 lbs.	175 lbs.



Bath Environment

www.whirlpoolbath.net
whirlpool@earthlink.net
800-894-1022



THE EVERSON I & II



V E R S I O N I & I I

I MODEL: #4260-EW
 ACRYLIC BATH ONLY: #4260-ET

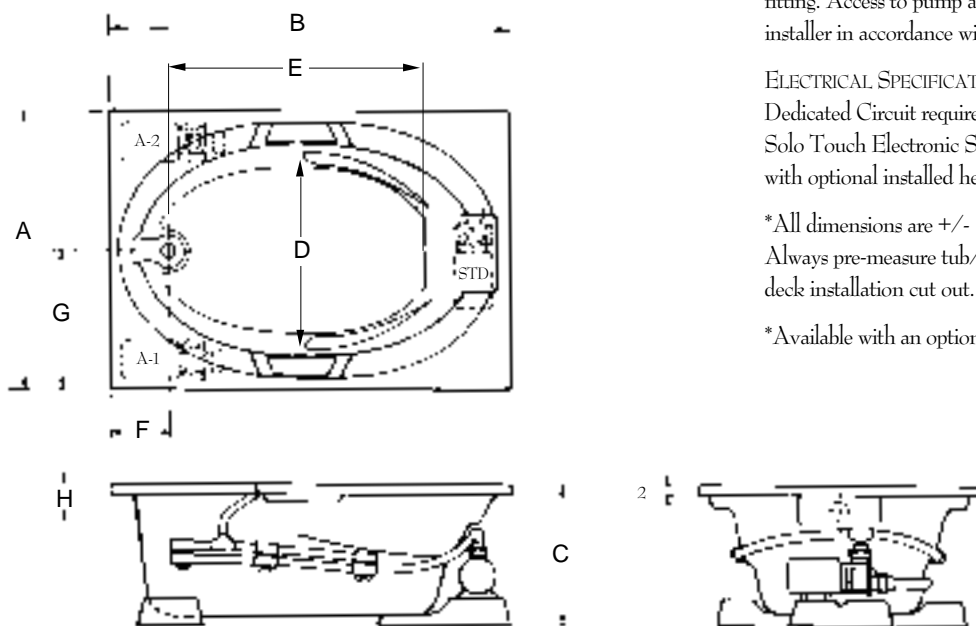
II MODEL: #4272-EW
 ACRYLIC BATH ONLY: #4272-ET

The acrylic whirlpool bath models shown on this page are manufactured by Laurel Mountain Whirlpools, Inc. The models shall be constructed of .125 thick cast acrylic sheet, backed by layers of polyester resin and fiberglass roving. It will be mounted on a FRP pre-leveled base. All components will be UL listed and approved. The pump motor will be 2 horsepower (1 phase, 115V, 60HZ, 3450 RPM, pre-mounted) and the plumbing system will be rigid PVC. The unit will contain 6 multi-directional, adjustable jets, dual air controls and a safety suction fitting. Access to pump and plumbing system must be provided by installer in accordance with established plumbing and electrical codes.

ELECTRICAL SPECIFICATIONS - 115V, 20 AMP, GFCI Protected Dedicated Circuit required for either Standard Air Switch or optional Solo Touch Electronic System. Additional identical circuit required with optional installed heater.

*All dimensions are +/- 3/8" and subject to change without notice. Always pre-measure tub/whirlpool prior to framing alcove or creating deck installation cut out.

*Available with an optional attachable skirt with removable access panel.



MODEL #	A	B	C	D	E	F	G	H
4260-EW / 4260-ET	41 ³ / ₄	59 ¹ / ₂	21 ¹ / ₂	27	36	9	21	5 ¹ / ₂
4272-EW / 4272-ET	41 ⁵ / ₈	71 ¹ / ₂	21 ¹ / ₂	28	45	11	20 ³ / ₄	5 ¹ / ₂

MODEL #	WATER CAPACITY OPERATING LEVEL	WATER CAPACITY TO OVERFLOW	APPROX. UNIT WT.	APPROX. SHIPPING WT.
4260-EW	38 gal.	56 gal	140 lbs.	205 lbs.
4260-ET	-	56 gal	105 lbs.	170 lbs.
4272-EW	59 gal.	75 gal.	155 lbs.	215 lbs.
4272-ET	-	75 gal.	120 lbs.	185 lbs.



Bath Environment

www.whirlpoolbath.net
 whirlpool@earthlink.net
 800-894-1022



THE EVERSON III & IV



VERSION III & IV

III MODEL: #3660-EW
 ACRYLIC BATH ONLY: #3660-ET

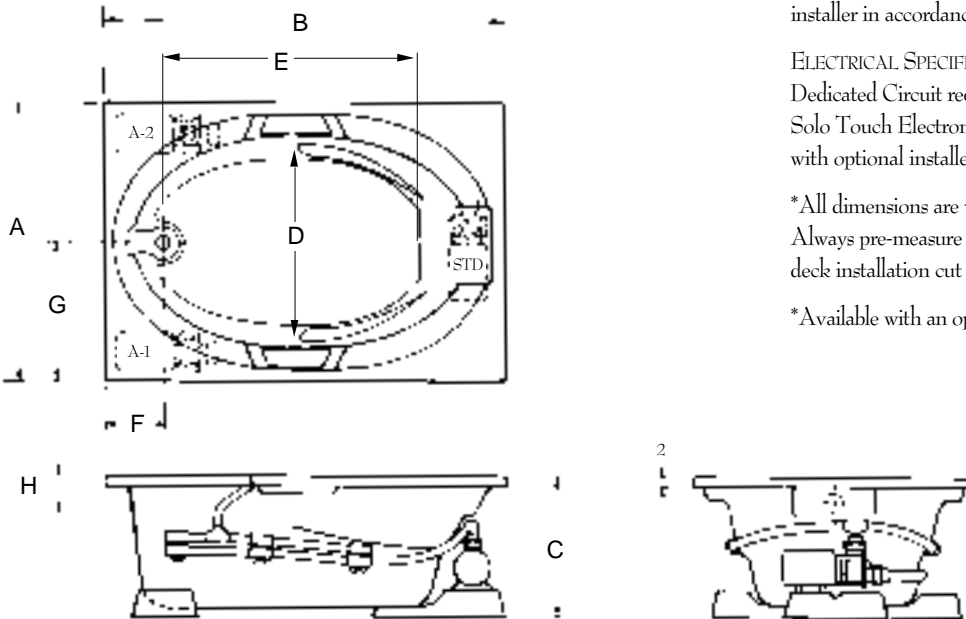
IV MODEL: #3672-EW
 ACRYLIC BATH ONLY: #3672-ET

The acrylic whirlpool bath models shown on this page are manufactured by Laurel Mountain Whirlpools, Inc. The models shall be constructed of .125 thick cast acrylic sheet, backed by layers of polyester resin and fiberglass roving. It will be mounted on a FRP pre-leveled base. All components will be UL listed and approved. The pump motor will be 2 horsepower (1 phase, 115V, 60HZ, 3450 RPM, pre-mounted) and the plumbing system will be rigid PVC. The unit will contain 6 multi-directional, adjustable jets, dual air controls and a safety suction fitting. Access to pump and plumbing system must be provided by installer in accordance with established plumbing and electrical codes.

ELECTRICAL SPECIFICATIONS - 115V, 20 AMP, GFCI Protected Dedicated Circuit required for either Standard Air Switch or optional Solo Touch Electronic System. Additional identical circuit required with optional installed heater.

*All dimensions are +/- 3/8" and subject to change without notice. Always pre-measure tub/whirlpool prior to framing alcove or creating deck installation cut out.

*Available with an optional attachable skirt with removable access panel.



MODEL #	A	B	C	D	E	F	G	H
3660-EW / 3660-ET	36	60	21½	22	36	10	18	5½
3672-EW / 3672-ET	36	72	21½	22	48	10	18	5½

MODEL #	WATER CAPACITY OPERATING LEVEL	WATER CAPACITY TO OVERFLOW	APPROX. UNIT WT.	APPROX. SHIPPING WT.
3660-EW	42 gal.	51 gal.	140 lbs.	200 lbs.
3660-ET	-	51 gal.	115 lbs.	170 lbs.
3672-EW	54 gal.	63 gal.	150 lbs.	210 lbs.
3672-ET	-	63 gal.	125 lbs.	180 lbs.



Bath Environment

www.whirlpoolbath.net
 whirlpool@earthlink.net
 800-894-1022



THE EVERSON V & VI
WITH INTEGRAL SKIRT, FLANGE, AND REMOVABLE PANEL



V E R S I O N V & V I

V MODEL: #4260-EW SR/SL
 ACRYLIC BATH ONLY: #4260-ET SR/SL

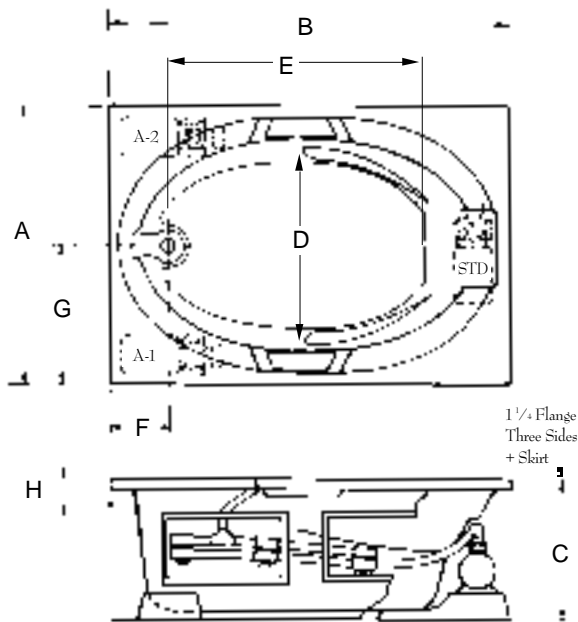
VI MODEL: #4272-EW SR/SL
 ACRYLIC BATH ONLY: #4272-ET SR/SL

The acrylic whirlpool bath models shown on this page are manufactured by Laurel Mountain Whirlpools, Inc. The models shall be constructed of .125 thick cast acrylic sheet, backed by layers of polyester resin and fiberglass roving. It will be mounted on a FRP pre-leveled base. All components will be UL listed and approved. The pump motor will be 2 horsepower (1 phase, 115V, 60HZ, 3450 RPM, pre-mounted) and the plumbing system will be rigid PVC. The unit will contain 6 multi-directional, adjustable jets, dual air controls and a safety suction fitting. Access to pump and plumbing system must be provided by installer in accordance with established plumbing and electrical codes.

ELECTRICAL SPECIFICATIONS - 115V, 20 AMP, GFCI Protected Dedicated Circuit required for either Standard Air Switch or optional Solo Touch Electronic System. Additional identical circuit required with optional installed heater.

*All dimensions are +/- 3/8" and subject to change without notice. Always pre-measure tub/whirlpool prior to framing alcove or creating deck installation cut out.

**Access panels on skirted tub only are available only when ordered as an upgrade option.



***All models shown are made with an integral skirt and an integral nailing flange.

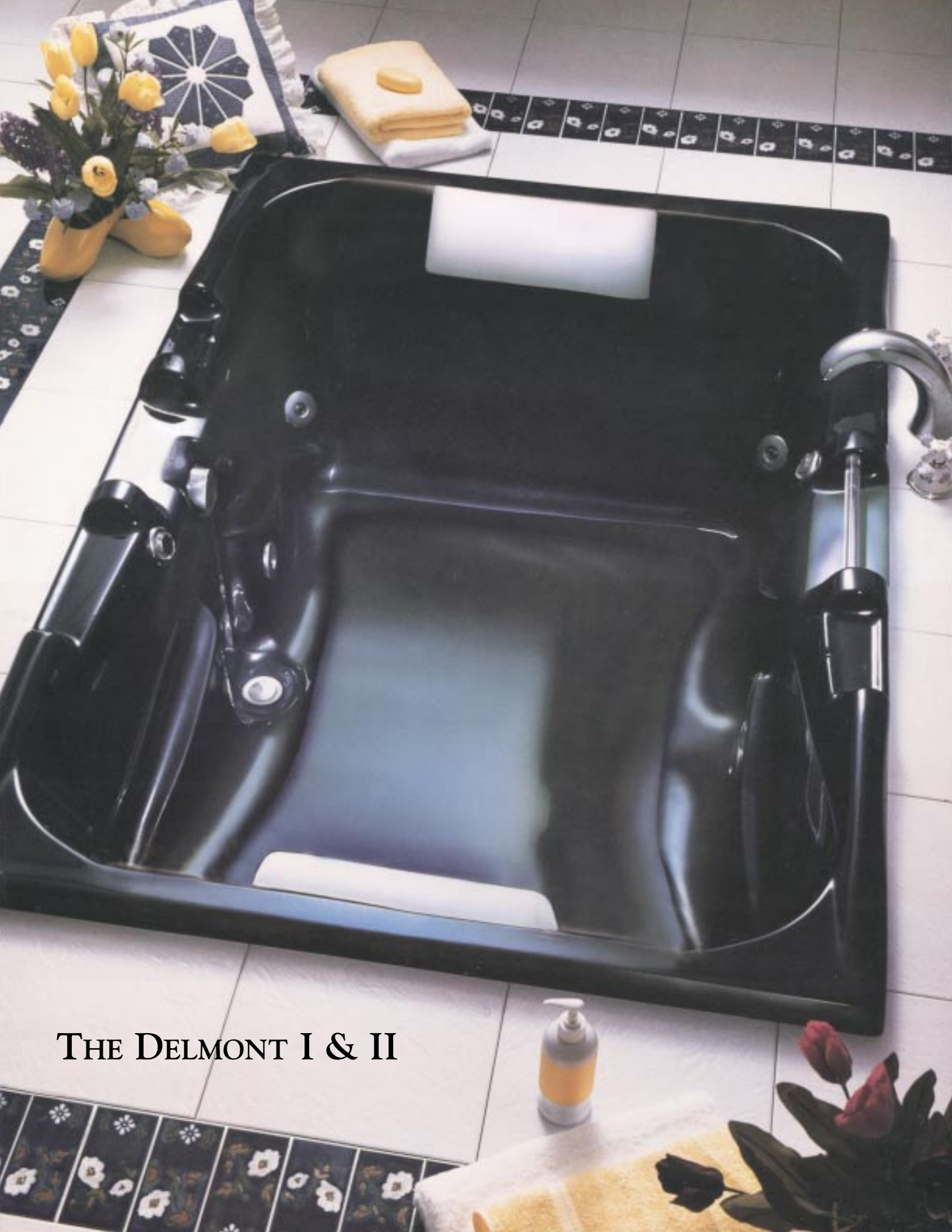
MODEL #	A	B	C	D	E	F	G	H
4260-EW / 4260-ET SR/SL	41 ³ / ₄	59 ⁷ / ₈	21 ¹ / ₂	26	36	9	20 ⁵ / ₈	3 ¹ / ₂
4272-EW / 4272-ET SR/SL	41 ³ / ₄	71 ³ / ₄	21 ¹ / ₂	28	45	11	20 ⁵ / ₈	3 ¹ / ₂

MODEL #	WATER CAPACITY OPERATING LEVEL	WATER CAPACITY TO OVERFLOW	APPROX. UNIT WT.	APPROX. SHIPPING WT.
4260-EW	38 gal.	56 gal.	140 lbs.	205 lbs.
4260-ET	-	56 gal.	105 lbs.	170 lbs.
4272-EW	59 gal.	75 gal.	155 lbs.	215 lbs.
4272-ET	-	75 gal.	120 lbs.	185 lbs.



Bath Environment

www.whirlpoolbath.net
 whirlpool@earthlink.net
 800-894-1022



THE DELMONT I & II



ELMONT I & II

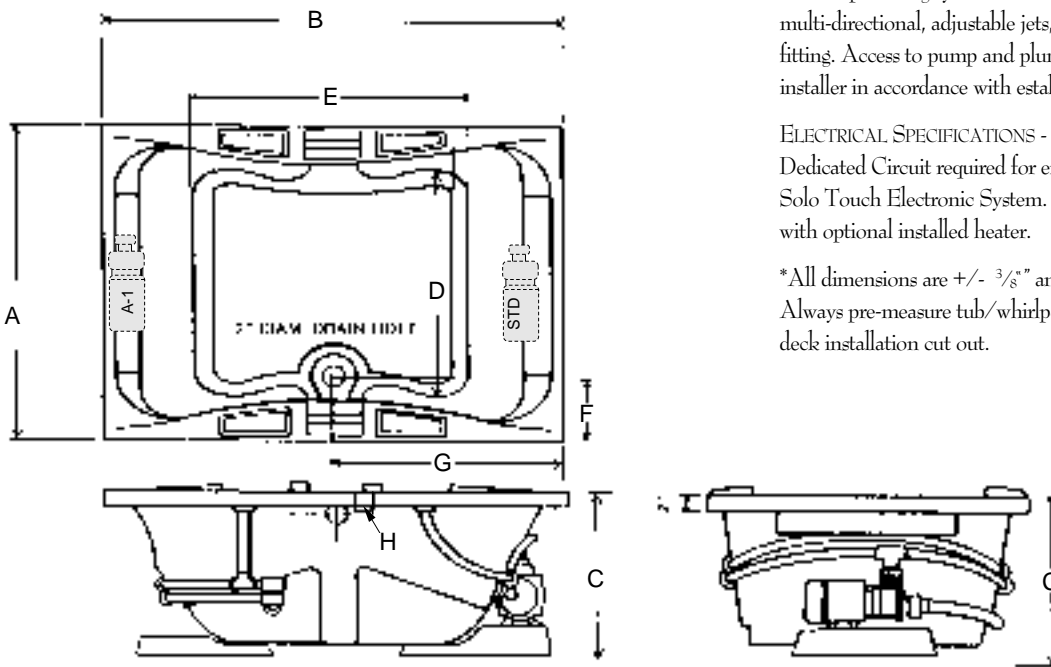
I MODEL: #4260-DW
 ACRYLIC BATH ONLY: #4260-DT

II MODEL: #4872-DW
 ACRYLIC BATH ONLY: #4872-DT

The acrylic whirlpool bath models shown on this page are manufactured by Laurel Mountain Whirlpools, Inc. The models shall be constructed of .125 thick cast acrylic sheet, backed by layers of polyester resin and fiberglass roving. It will be mounted on a FRP pre-leveled base. All components will be UL listed and approved. The pump motor will be 2 horsepower (1 phase, 115V, 60HZ, 3450 RPM, pre-mounted) and the plumbing system will be rigid PVC. The unit will contain 6 multi-directional, adjustable jets, dual air controls and a safety suction fitting. Access to pump and plumbing system must be provided by installer in accordance with established plumbing and electrical codes.

ELECTRICAL SPECIFICATIONS - 115V, 20 AMP, GFCI Protected Dedicated Circuit required for either Standard Air Switch or optional Solo Touch Electronic System. Additional identical circuit required with optional installed heater.

*All dimensions are +/- 3/8" and subject to change without notice. Always pre-measure tub/whirlpool prior to framing alcove or creating deck installation cut out.



MODEL #	A	B	C	D	E	F	G	H
4260-DW / 4260-DT	41 ³ / ₄	59 ⁵ / ₈	23	27	43	7	29 ³ / ₄	4 ¹ / ₄
4872-DW / 4872-DT	48	71 ¹ / ₄	23	34	50	8	35 ⁵ / ₈	3 ³ / ₄

MODEL #	WATER CAPACITY OPERATING LEVEL	WATER CAPACITY TO OVERFLOW	APPROX. UNIT WT.	APPROX. SHIPPING WT.
4260-DW	55 gal.	93 gal	170 lbs.	240 lbs.
4260-DT	-	93 gal	135 lbs.	205 lbs.
4872-DW	66 gal.	115 gal.	210 lbs.	280 lbs.
4872-DT	-	115 gal.	175 lbs.	245 lbs.



Bath Environment

www.whirlpoolbath.net
 whirlpool@earthlink.net
 800-894-1022



THE AMBLER



THE BEDFORD



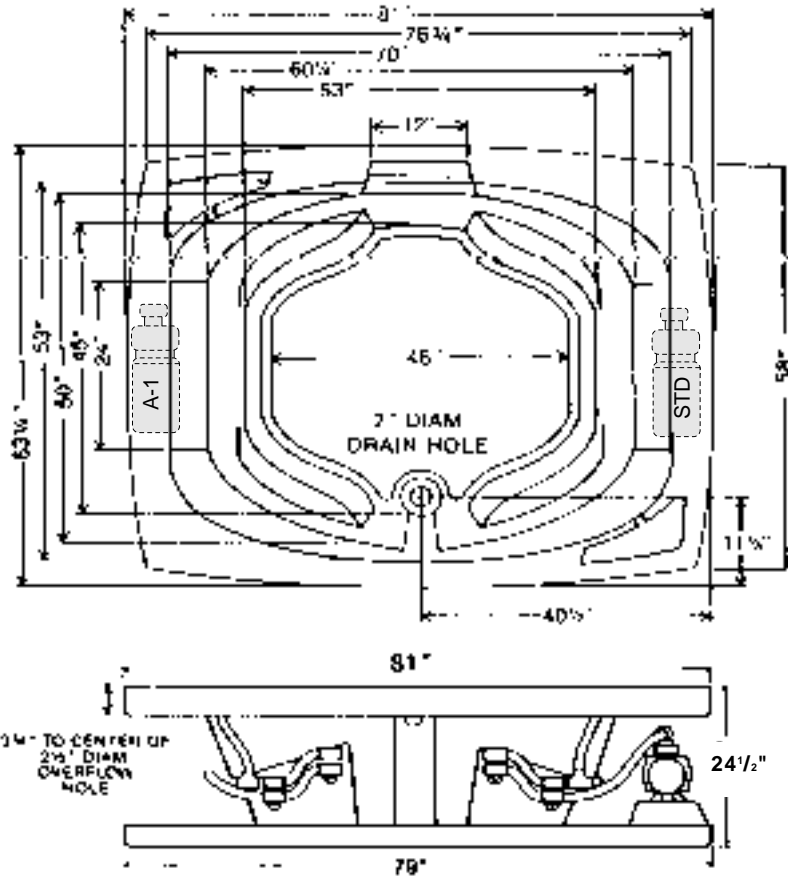


E D F O R D

MODEL: #6281-BW
 ACRYLIC BATH ONLY: #6281-BT

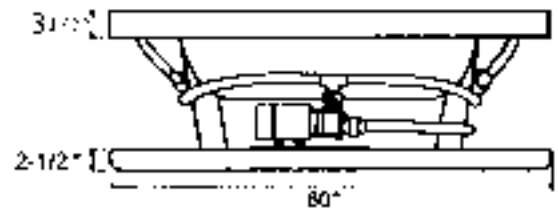
The acrylic whirlpool bath shall be model #6281-BW (6281-BT) as manufactured by Laurel Mountain Whirlpools, Inc. It shall be constructed of .125 thick cast acrylic sheet, backed by layers of polyester resin and fiberglass roving. It will be mounted on a FRP pre-levleed base. All components will be UL listed and approved. The pump motor will be 2½ horsepower (1 phase, 115V, 60HZ, 3450 RPM, pre-mounted) and the plumbing system will be rigid PVC. The unit will contain 8 multi-directional, adjustable jets, 4 air controls and a safety suction fitting. Access to pump and plumbing system must be provided by installer in accordance with established plumbing and electrical codes.

ELECTRICAL SPECIFICATIONS - 115V, 20 AMP, GFCI Protected Circuit. Additional identical circuit required with installed heater. If optional Solo Touch electronic on/off is installed, a 120 VAC, 20 AMP, GFCI dedicated circuit is required.



SPECIFICATIONS	WHIRLPOOL	TUB
81" x 63 1/4" x 24 1/2" Lip 3 1/2"		
Water Capacity - Operating Level	85.0gal.	
- To Overflow	135.0 gal.	135.0 gal.
Approx. Unit Weight	245.0 lbs.	210.0 lbs.
Approx. Shipping Weight	315.0 lbs.	280.0 lbs.

*All dimensions are +/- 3/8" and subject to change without notice. Always pre-measure tub/whirlpool prior to framing alcove or creating deck installation cut out.



ELECTRICAL REQUIREMENTS: 115V, 20 AMP, GFCI Protected Circuit. Additional source circuit required for optional In-Line "T" Heater. 120 VAC, 20 Amp, GFCI dedicated circuit required with option "Solo Touch" On/off control



Bath Environment

www.whirlpoolbath.net
 whirlpool@earthlink.net
 800-894-1022



THE CLAIRTON

ALSO AVAILABLE WITH AN OPTIONAL
ATTACHED SKIRT WITH REMOVABLE ACCESS PANEL

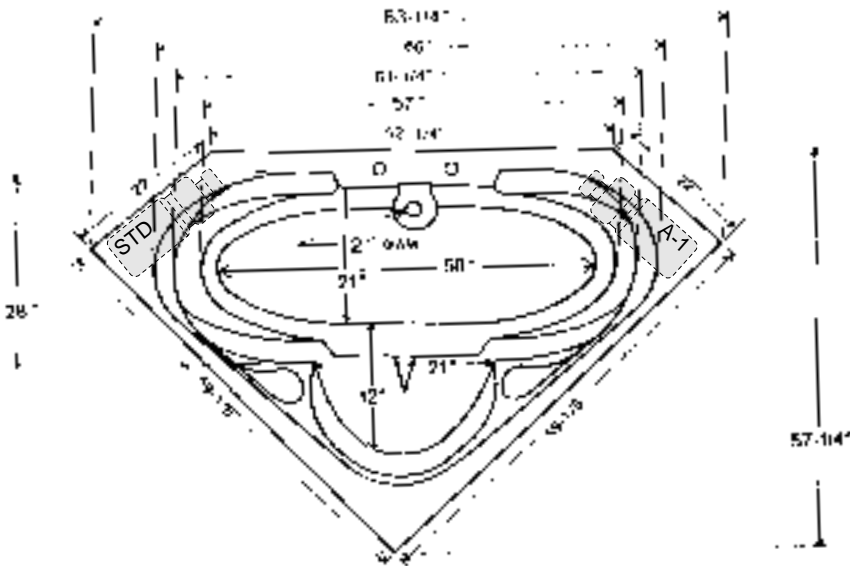


L A I R T O N

MODEL: #6060-CW
 ACRYLIC BATH ONLY: #6060-CT

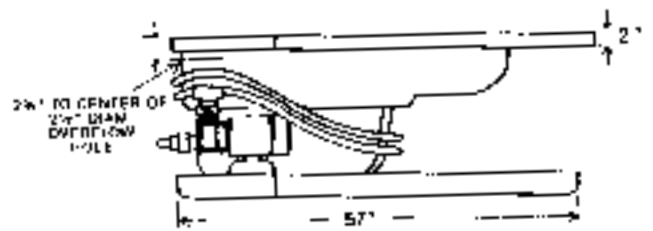
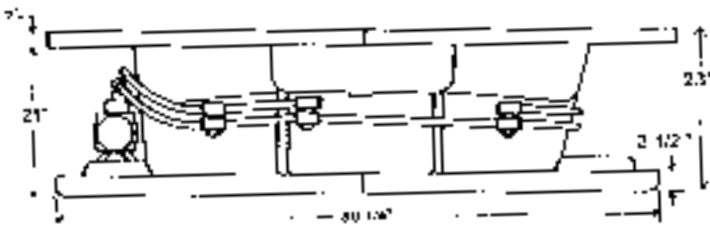
The acrylic whirlpool bath shall be model #6060-CW (6060-CT) as manufactured by Laurel Mountain Whirlpools, Inc. It shall be constructed of .125 thick cast acrylic sheet, backed by layers of polyester resin and fiberglass roving. It will be mounted on a FRP pre-leveled base. All components will be UL listed and approved. The pump motor will be 2 horsepower (1 phase, 115V, 60HZ, 3450 RPM, pre-mounted) and the plumbing system will be rigid PVC. The unit will contain 6 multi-directional, adjustable jets, dual air controls and a safety suction fitting. Access to pump and plumbing system must be provided by installer in accordance with established plumbing and electrical codes.

ELECTRICAL SPECIFICATIONS - 115V, 20 AMP, GFCI Protected Circuit. Additional identical circuit required with installed heater. If optional Solo Touch electronic on/off is installed, a 120 VAC, 20 AMP, GFCI dedicated circuit is required.



SPECIFICATIONS	WHIRLPOOL	TUB
59 ¹ / ₈ " x 59 ¹ / ₈ " x 22" x 22" x 52 ¹ / ₄ " x 23" Lip 2"		
Water Capacity - Operating Level	45.0 gal.	
- To Overflow	82.0 gal.	82.0 gal.
Approx. Unit Weight	190.0 lbs.	155.0 lbs.
Approx. Shipping Weight	260.0 lbs.	225.0 lbs.

*All dimensions are +/- 3/8" and subject to change without notice. Always pre-measure tub/whirlpool prior to framing alcove or creating deck installation cut out.



ELECTRICAL REQUIREMENTS: 115V, 20 AMP, GFCI Protected Circuit. Additional source circuit required for optional In-Line "I" Heater. 120 VAC, 20 Amp, GFCI dedicated circuit required with option "Solo Touch" On/off control



Bath Environment

www.whirlpoolbath.net
 whirlpool@earthlink.net
 800-894-1022



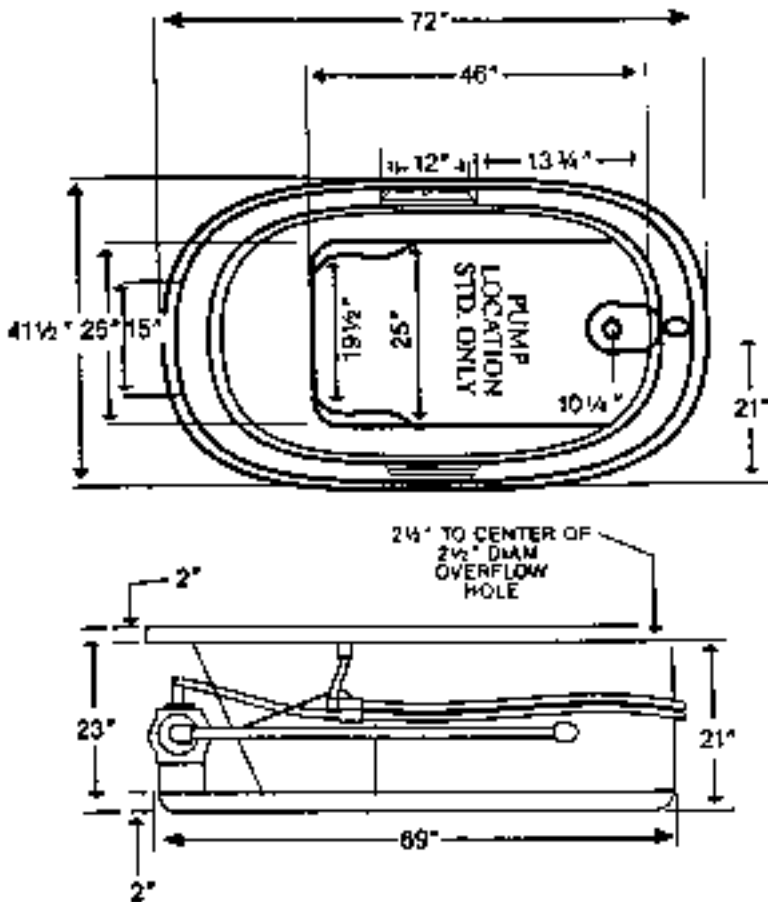
THE YORK

Z O R K

MODEL: #4272-YW
 ACRYLIC BATH ONLY: #4272-YT

The acrylic whirlpool bath shall be model #4272-YW (4272-YT) as manufactured by Laurel Mountain Whirlpools, Inc. It shall be constructed of .125 thick cast acrylic sheet, backed by layers of polyester resin and fiberglass roving. It will be mounted on a FRP pre-leveled base. All components will be UL listed and approved. The pump motor will be 2 horsepower (1 phase, 115V, 60HZ, 3450 RPM, pre-mounted) and the plumbing system will be rigid PVC. The unit will contain 6 multi-directional, adjustable jets, dual air controls and a safety suction fitting. Access to pump and plumbing system must be provided by installer in accordance with established plumbing and electrical codes.

ELECTRICAL SPECIFICATIONS - 115V, 20 AMP, GFCI Protected Circuit. Additional identical circuit required with installed heater. If optional Solo Touch electronic on/off is installed, a 120 VAC, 20 AMP, GFCI dedicated circuit is required.



SPECIFICATIONS	WHIRLPOOL	TUB
72" x 41 1/2" x 23" Lip 2"		
Water Capacity - Operating Level	45.0 gal.	
- To Overflow	82.0 gal.	82.0 gal.
Approx. Unit Weight	190.0 lbs.	155.0 lbs.
Approx. Shipping Weight	260.0 lbs.	225.0 lbs.

*All dimensions are +/- 3/8" and subject to change without notice. Always pre-measure tub/whirlpool prior to framing alcove or creating deck installation cut out.

ELECTRICAL REQUIREMENTS: 115V, 20 AMP, GFCI Protected Circuit. Additional source circuit required for optional In-Line "I" Heater. 120 VAC, 20 Amp, GFCI dedicated circuit required with option "Solo Touch" On/off control



Bath Environment

www.whirlpoolbath.net
 whirlpool@earthlink.net
 800-894-1022



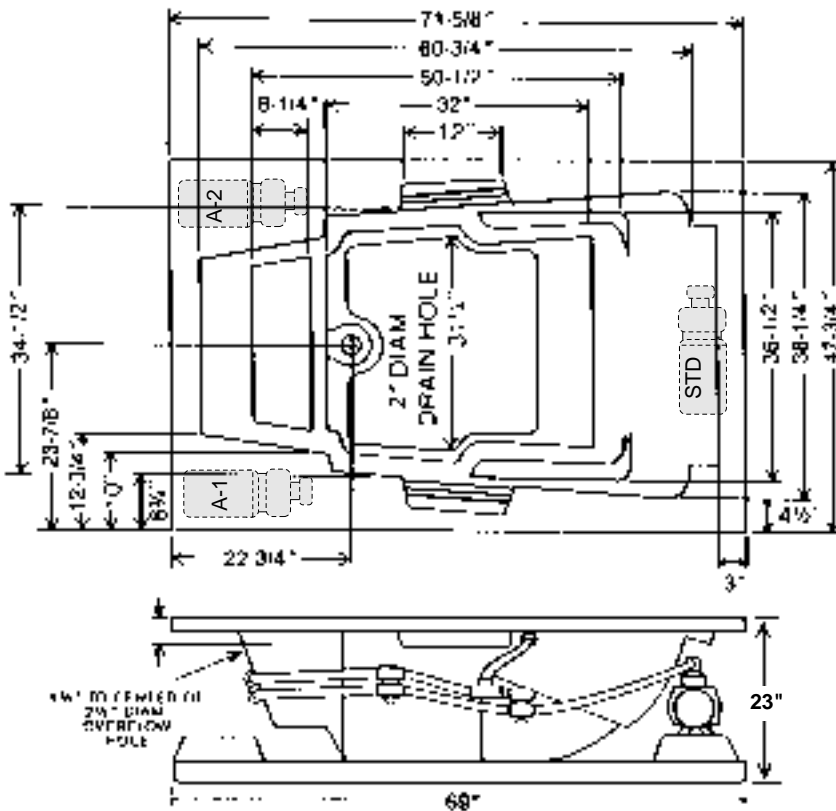
THE HALIFAX

A L I F A X

MODEL: #4872-HW
 ACRYLIC BATH ONLY: #4872-HT

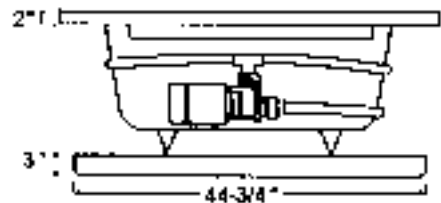
The acrylic whirlpool bath shall be model #4872-HW (4872-HT) as manufactured by Laurel Mountain Whirlpools, Inc. It shall be constructed of .125 thick cast acrylic sheet, backed by layers of polyester resin and fiberglass roving. It will be mounted on a FRP pre-leveled base. All components will be UL listed and approved. The pump motor will be 2 horsepower (1 phase, 115V, 60HZ, 3450 RPM, pre-mounted) and the plumbing system will be rigid PVC. The unit will contain 6 multi-directional, adjustable jets, dual air controls and a safety suction fitting. Access to pump and plumbing system must be provided by installer in accordance with established plumbing and electrical codes.

ELECTRICAL SPECIFICATIONS - 115V, 20 AMP, GFCI Protected Circuit. Additional identical circuit required with installed heater. If optional Solo Touch electronic on/off is installed, a 120 VAC, 20 AMP, GFCI dedicated circuit is required.



SPECIFICATIONS	WHIRLPOOL	TUB
71 ⁵ / ₈ " x 47 ³ / ₄ " x 23" Lip 2"		
Water Capacity - Operating Level	75.0 gal.	
- To Overflow	98.0 gal.	98.0 gal.
Approx. Unit Weight	230.0 lbs.	195.0 lbs.
Approx. Shipping Weight	300.0 lbs.	265.0 lbs.

*All dimensions are +/- 3/8" and subject to change without notice. Always pre-measure tub/whirlpool prior to framing alcove or creating deck installation cut out.



ELECTRICAL REQUIREMENTS: 115V, 20 AMP, GFCI Protected Circuit. Additional source circuit required for optional In-Line "T" Heater. 120 VAC, 20 Amp, GFCI dedicated circuit required with option "Solo Touch" On/off control



Bath Environment

www.whirlpoolbath.net
 whirlpool@earthlink.net
 800-894-1022